



New guidance for better decisions in complex times:

Guidance for Strategic Decisions on Climate and Disaster Risk

In partnership with



Australian Government
Department of Home Affairs



The context



In partnership with



Australian Government
Department of Home Affairs



Ramana James and Georgine Roodenrys: bit.ly/DisasterRiskVideos

In partnership with



Australian Government
Department of Home Affairs



The guidance



<https://knowledge.aidr.org.au/resources/strategic-disaster-risk-assessment-guidance/>

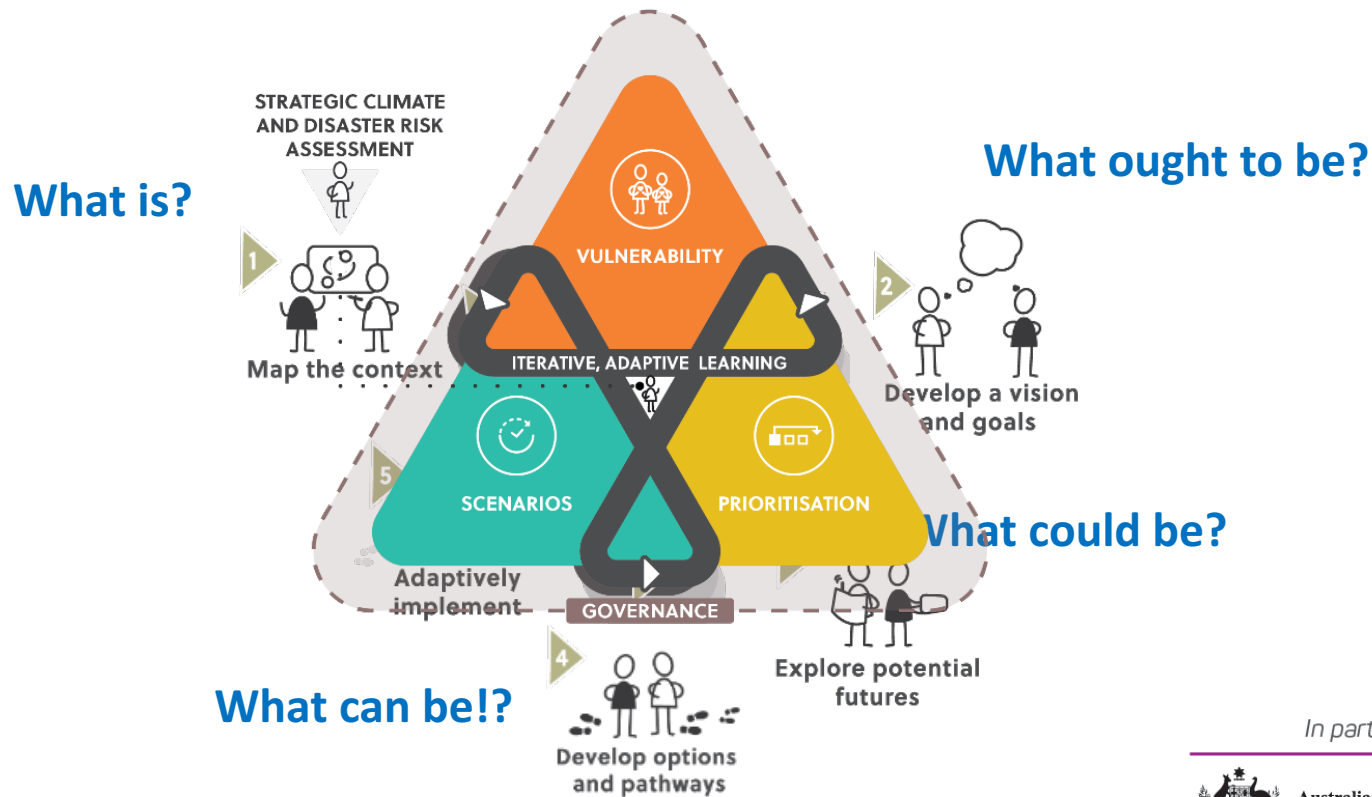
In partnership with



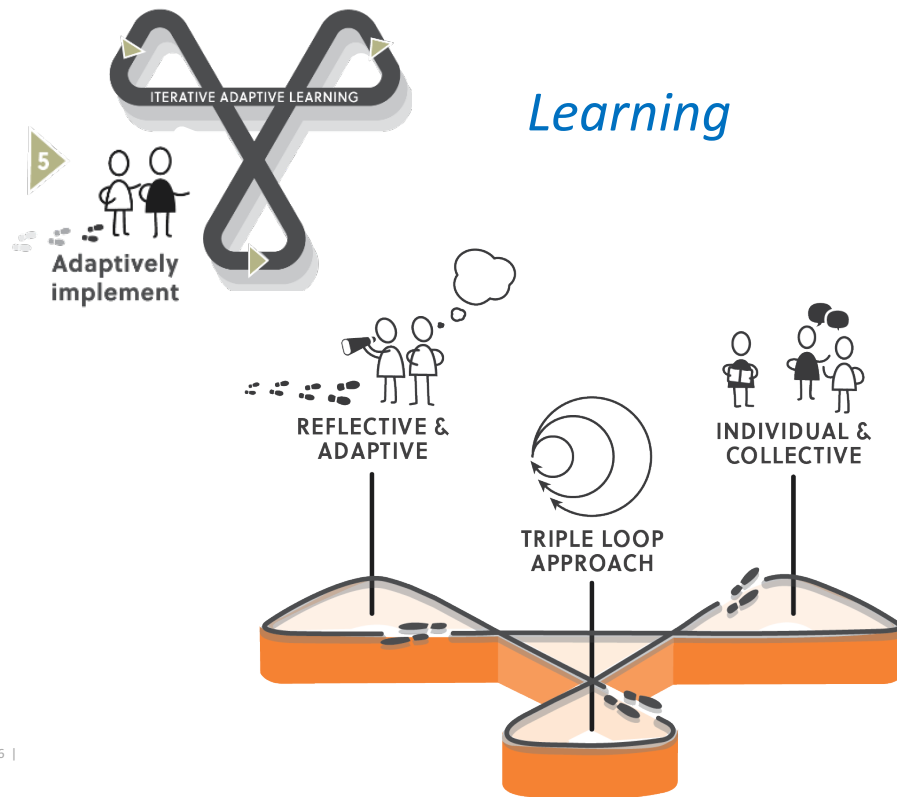
Australian Government
Department of Home Affairs



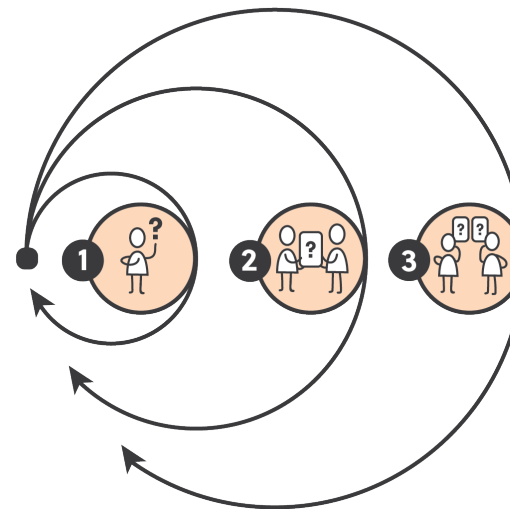
Adaptive decision making and learning



Adaptive decision making and learning



MULTI-LOOP LEARNING



- 1** Are we doing things right?
- 2** Are we doing the right things?
- 3** How do we decide what is right?

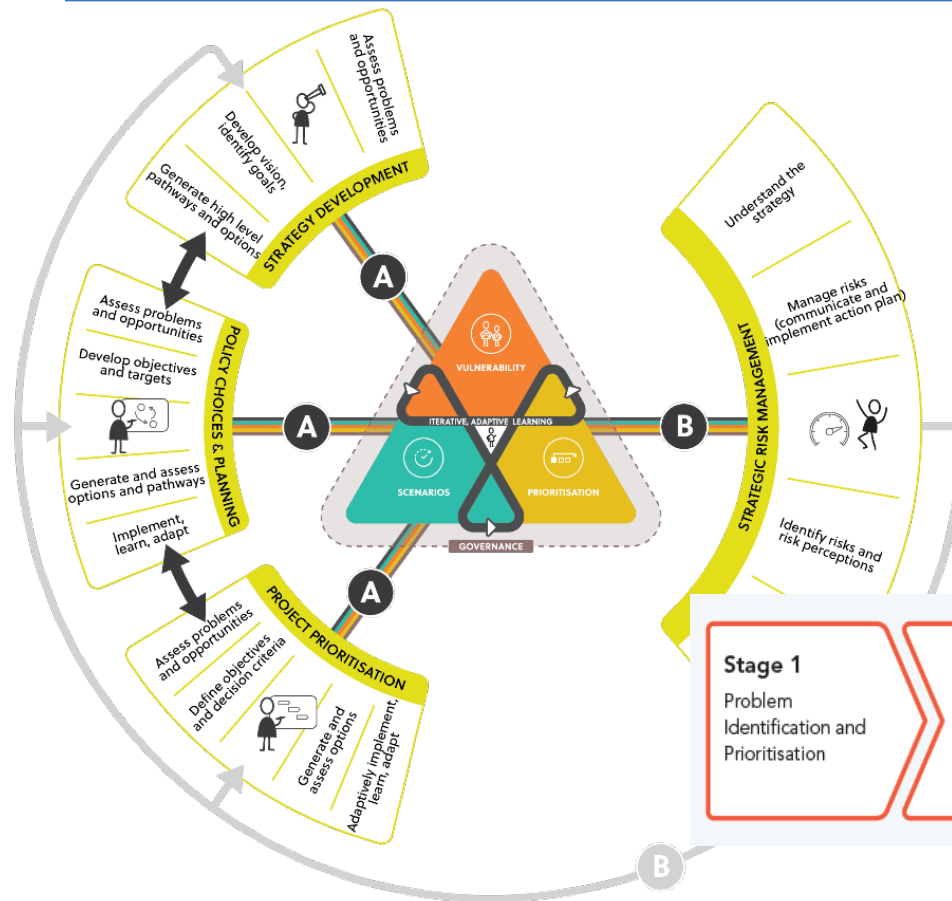
In partnership with



Australian Government
Department of Home Affairs



Framing and scope of the Guidance

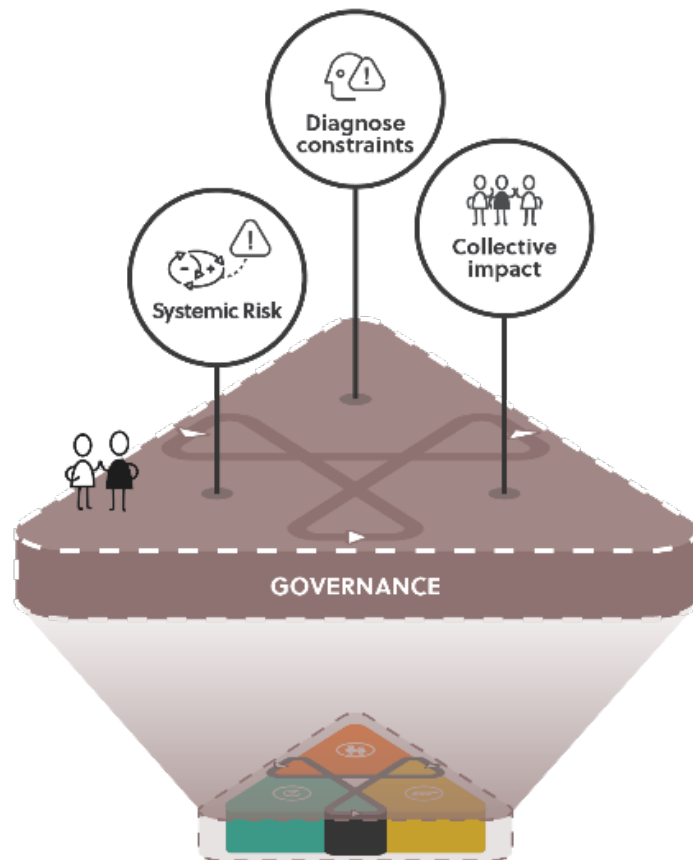


The guidance complements existing decision-making processes and the methods, tools and practices used by decision makers

Infrastructure Australia's Assessment Framework



Guidance on Systemic Risk Governance



Systemic risks

Systemic risks are risks that could trigger severe instability or collapse of an organisation, industry, economy or system.

These are often referred to as 'strategic risks' to highlight their relevance to the strategic direction of an organisation, sector or region.

In partnership with

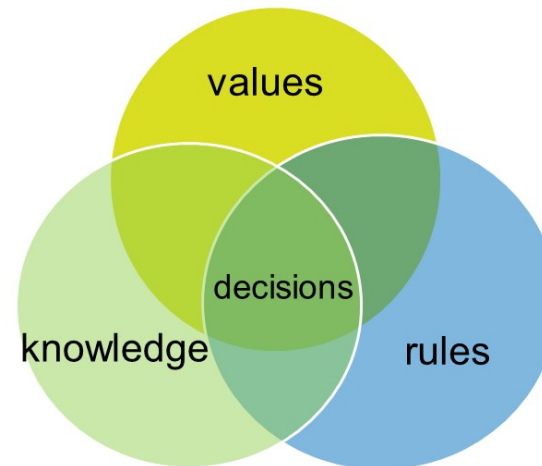
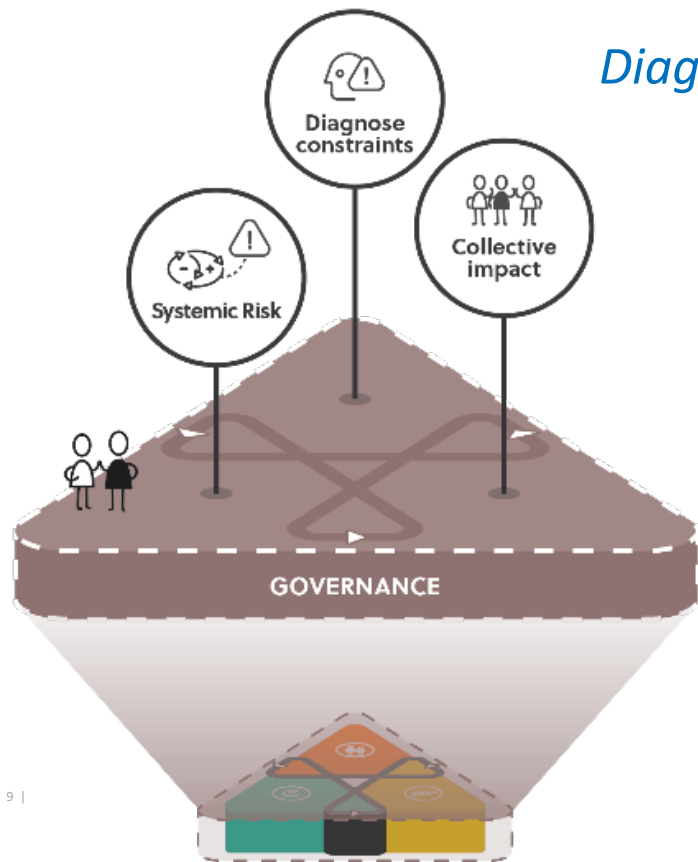


Australian Government
Department of Home Affairs



Guidance on Systemic Risk Governance

Diagnosing constraints



- Need *knowledge* to choose and implement an option
- Need to accept the knowledge and want the outcomes (*values*)
- Need to be allowed to implement the option to achieve the outcomes? (*rules*)

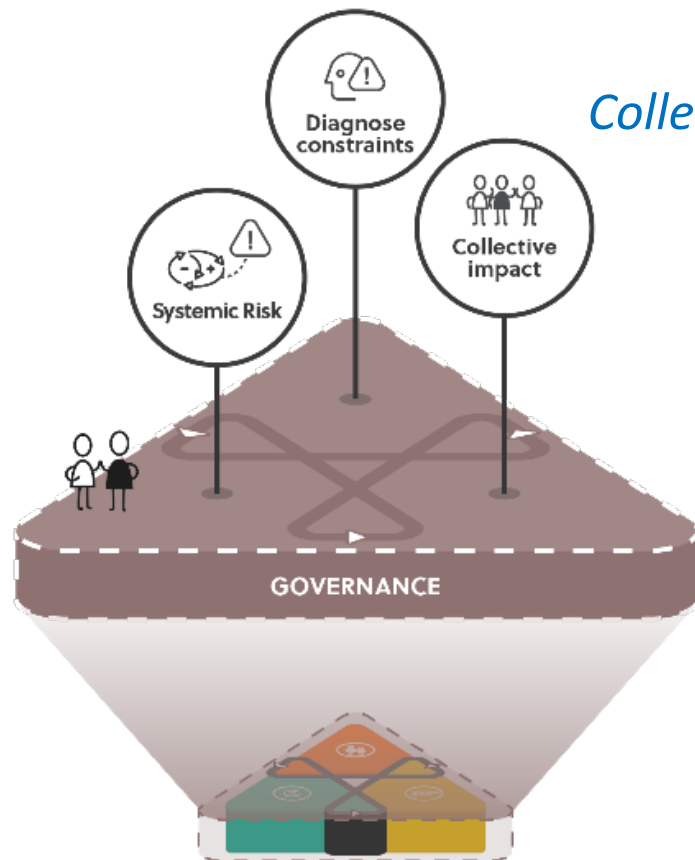
In partnership with



Australian Government
Department of Home Affairs



Guidance on Systemic Risk Governance



Collective impact initiatives:

1. Setting a common vision and agenda
2. Working out how to realise this:
 - mutually reinforcing activities
 - shared measurement system, and
 - continual communication
3. Identifying boundary-spanning organisations and networks

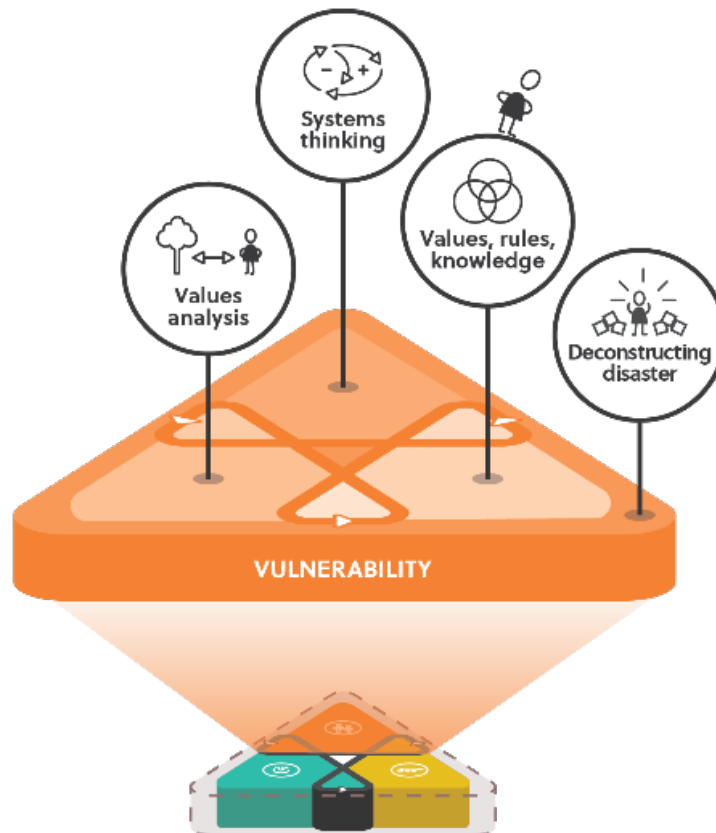
In partnership with



Australian Government
Department of Home Affairs



Guidance on assessing vulnerability



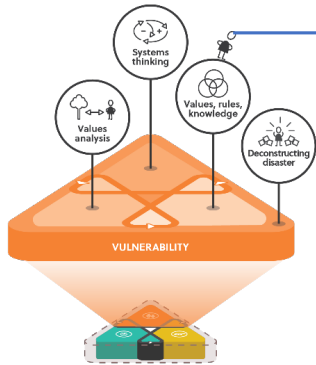
In partnership with



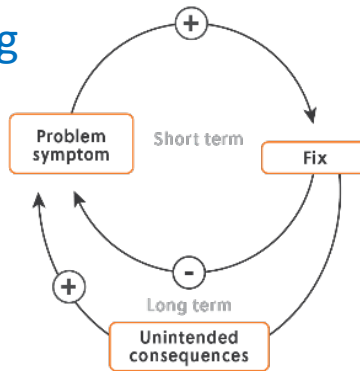
Australian Government
Department of Home Affairs



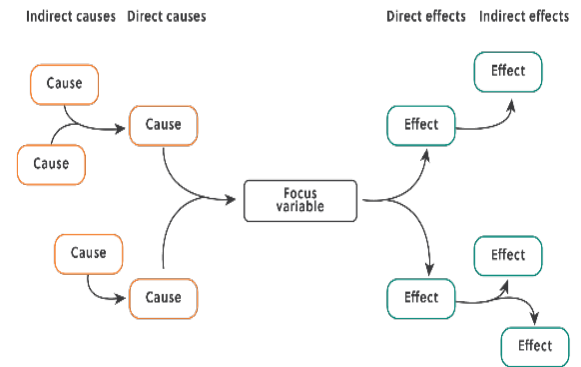
Guidance on assessing vulnerability



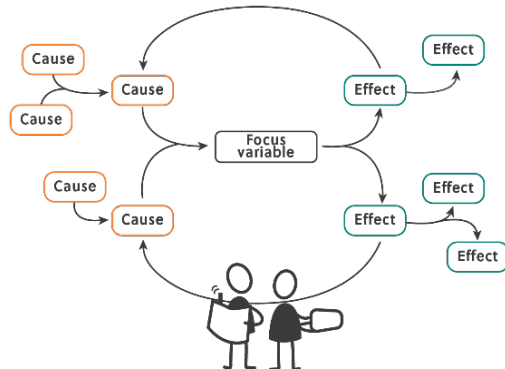
Systems thinking



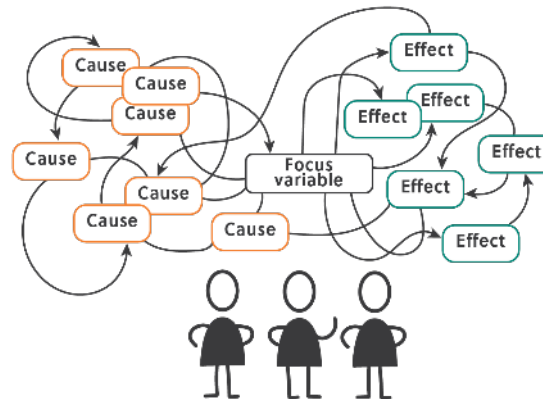
CAUSE-EFFECT DIAGRAMS



INTERMEDIATE DISTILLATION OF CAUSES AND EFFECTS TO TYPICAL SYSTEMS PATTERNS



CAUSE AND EFFECT MAPPING



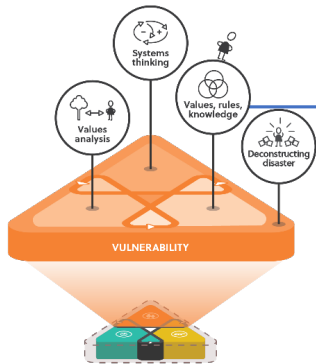
In partnership with



Australian Government
Department of Home Affairs

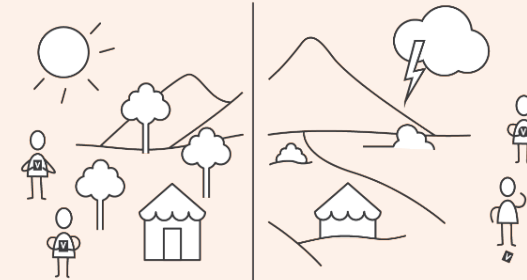


Guidance on assessing vulnerability

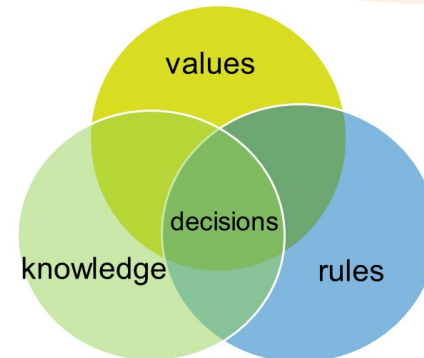


Values analysis

People value things differently in stable times versus times of disruption



Value relationships and tensions



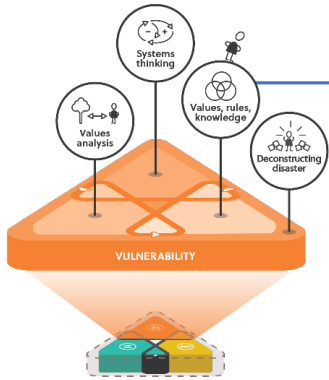
In partnership with



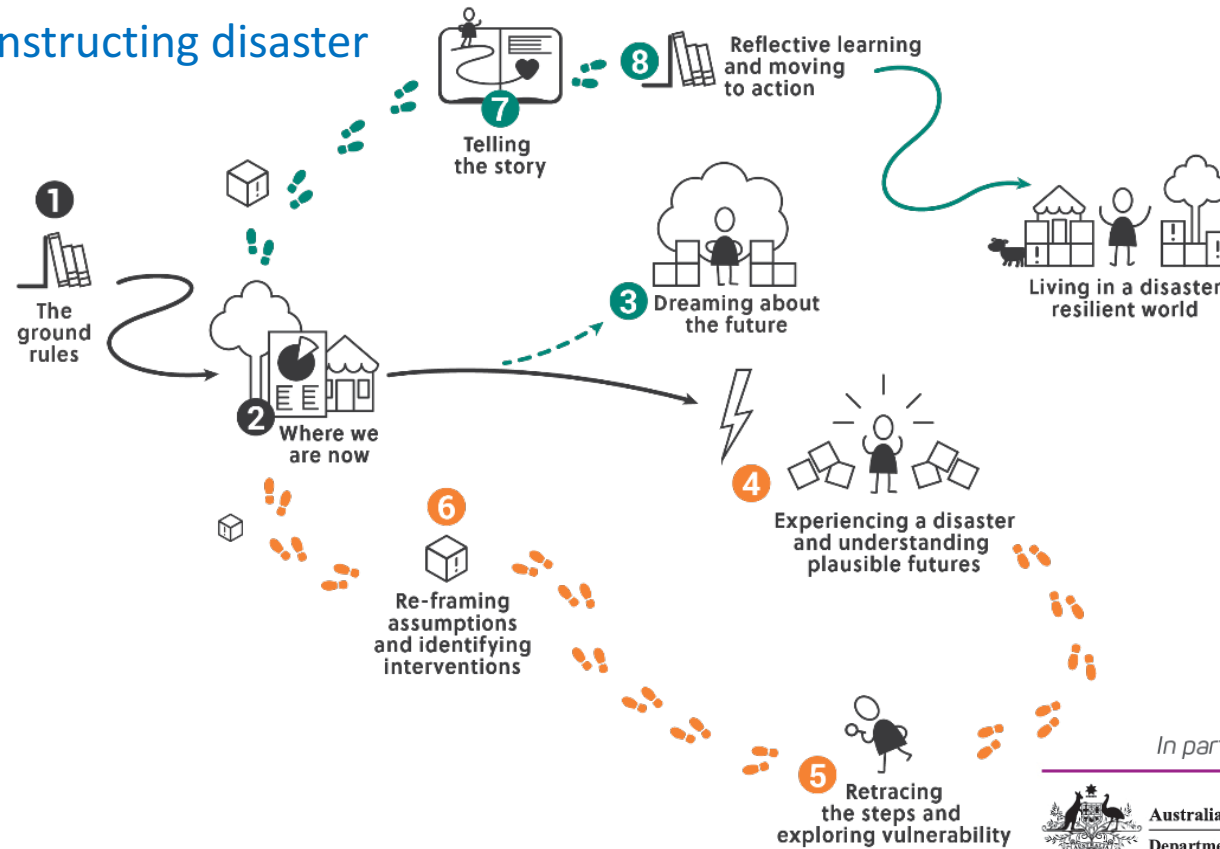
Australian Government
Department of Home Affairs



Guidance on assessing vulnerability



Deconstructing disaster



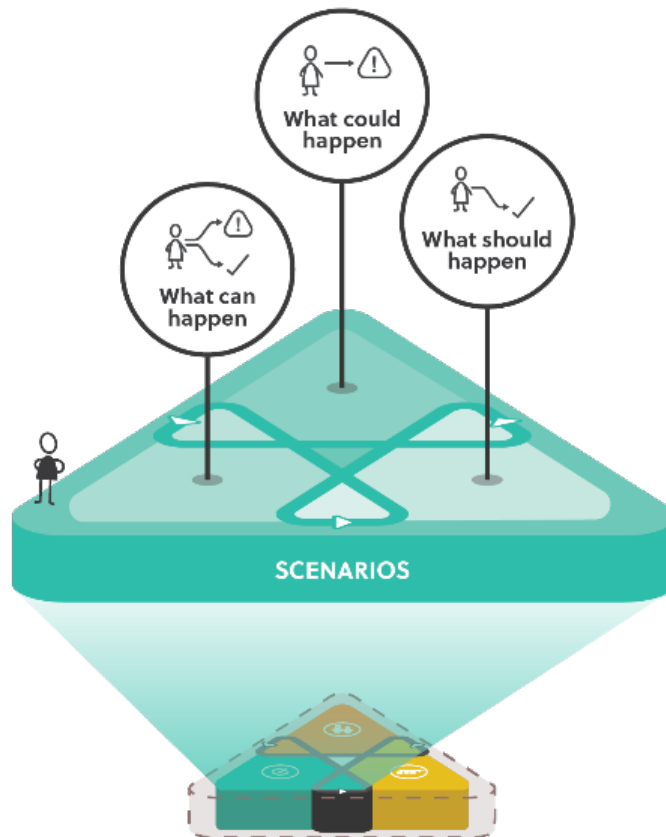
In partnership with



Australian Government
Department of Home Affairs



Guidance on scenarios



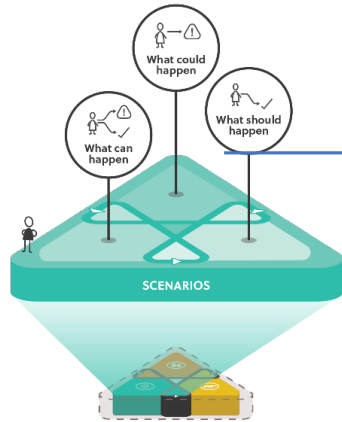
In partnership with



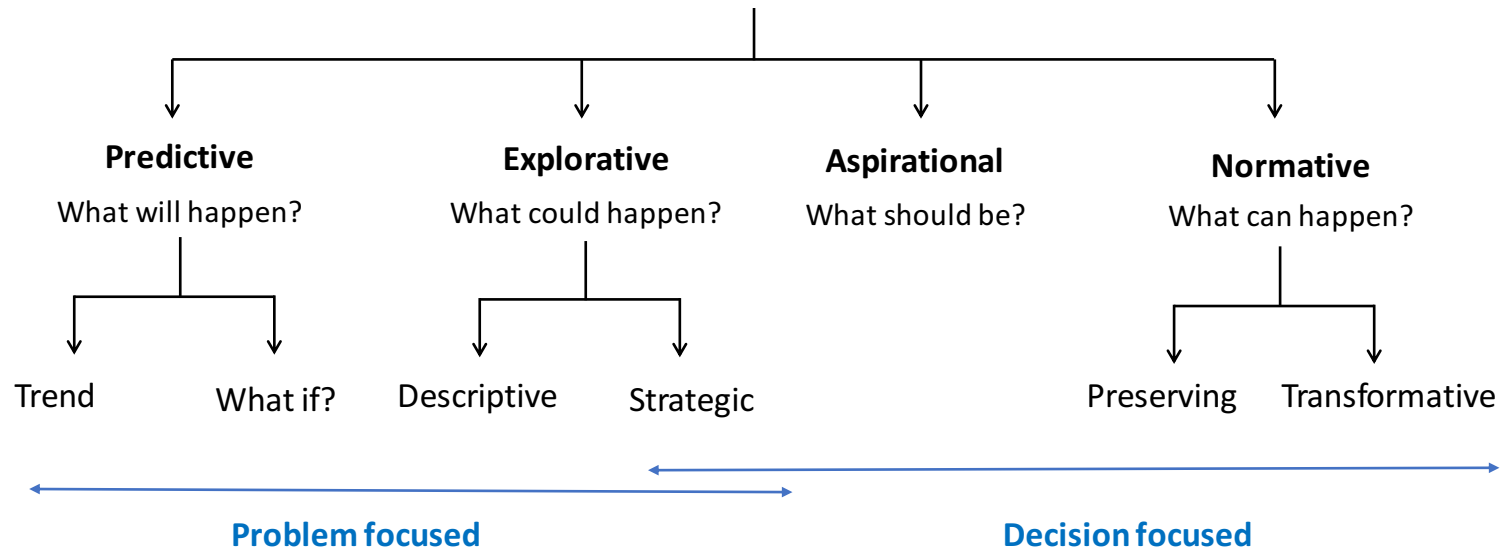
Australian Government
Department of Home Affairs



Guidance on scenarios



Types of scenarios



Scenarios to support robust decision making

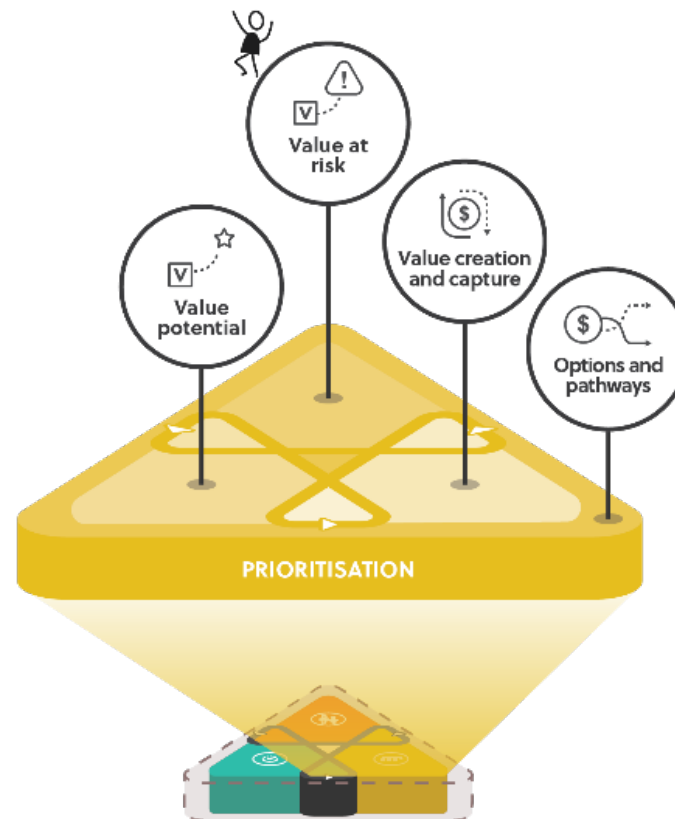
In partnership with



Australian Government
Department of Home Affairs



Guidance on Prioritisation



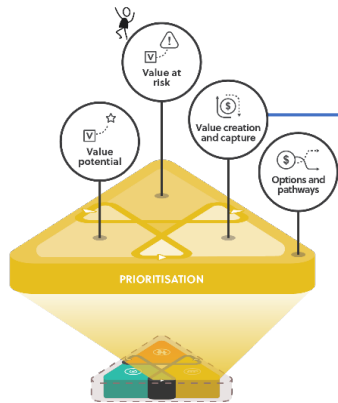
In partnership with



Australian Government
Department of Home Affairs

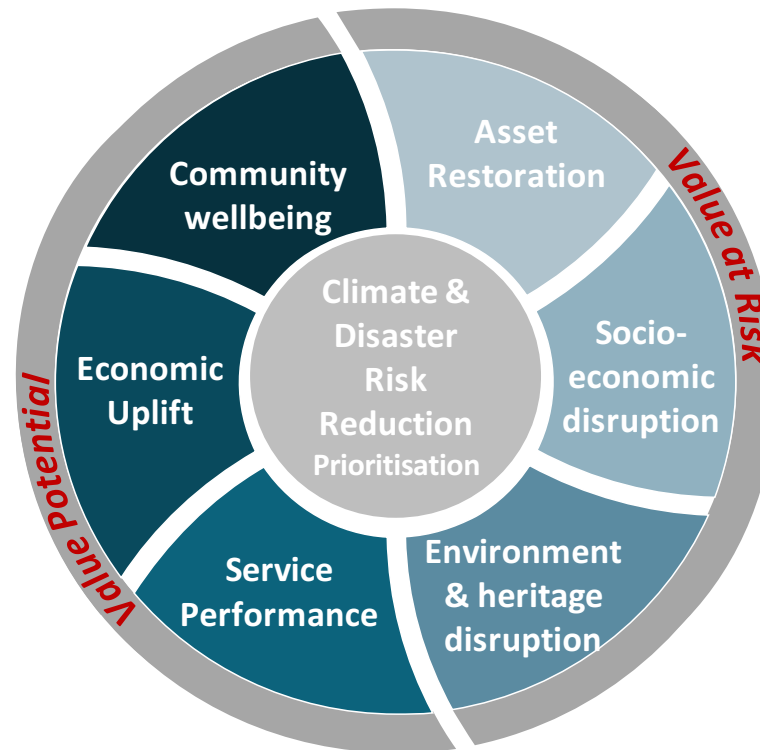


Guidance on Prioritisation



The prioritisation framework

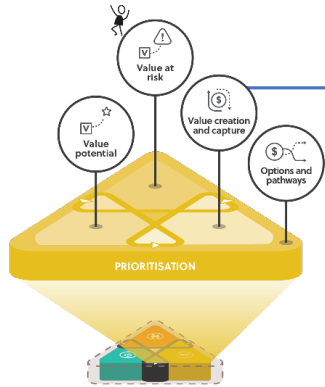
Value potential:
- The latent potential for increased value from DRR and climate resilience investments



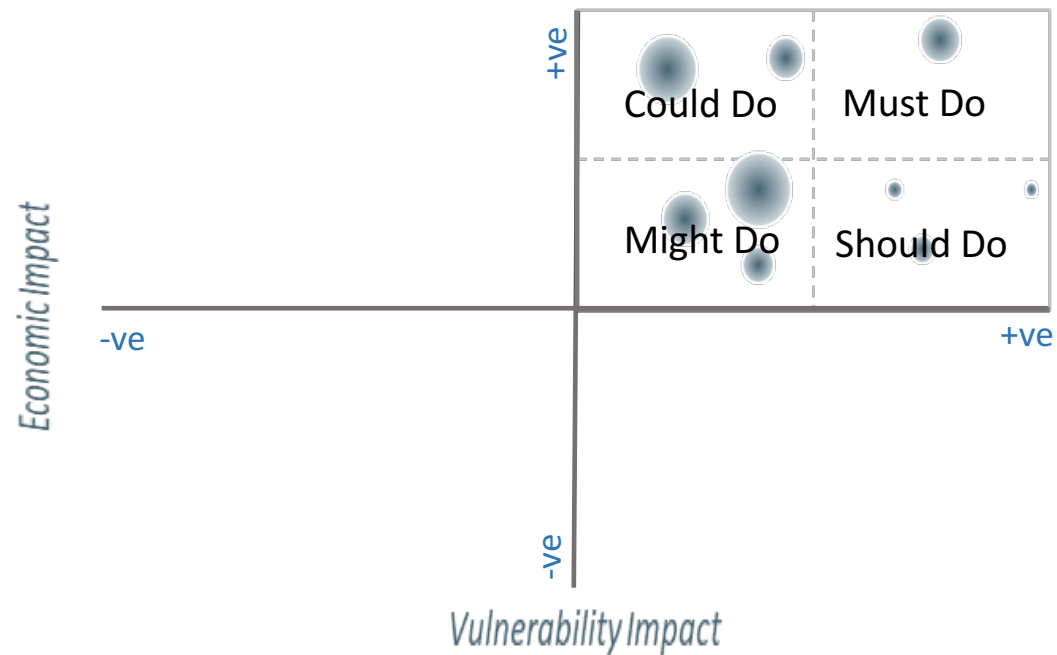
Value at risk:

- The product of exposure to an event and vulnerability to impact

Guidance on Prioritisation



Mapping outcomes from the prioritisation framework

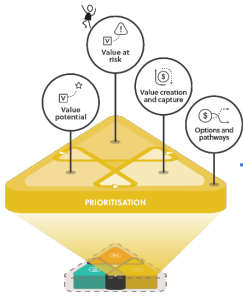


In partnership with



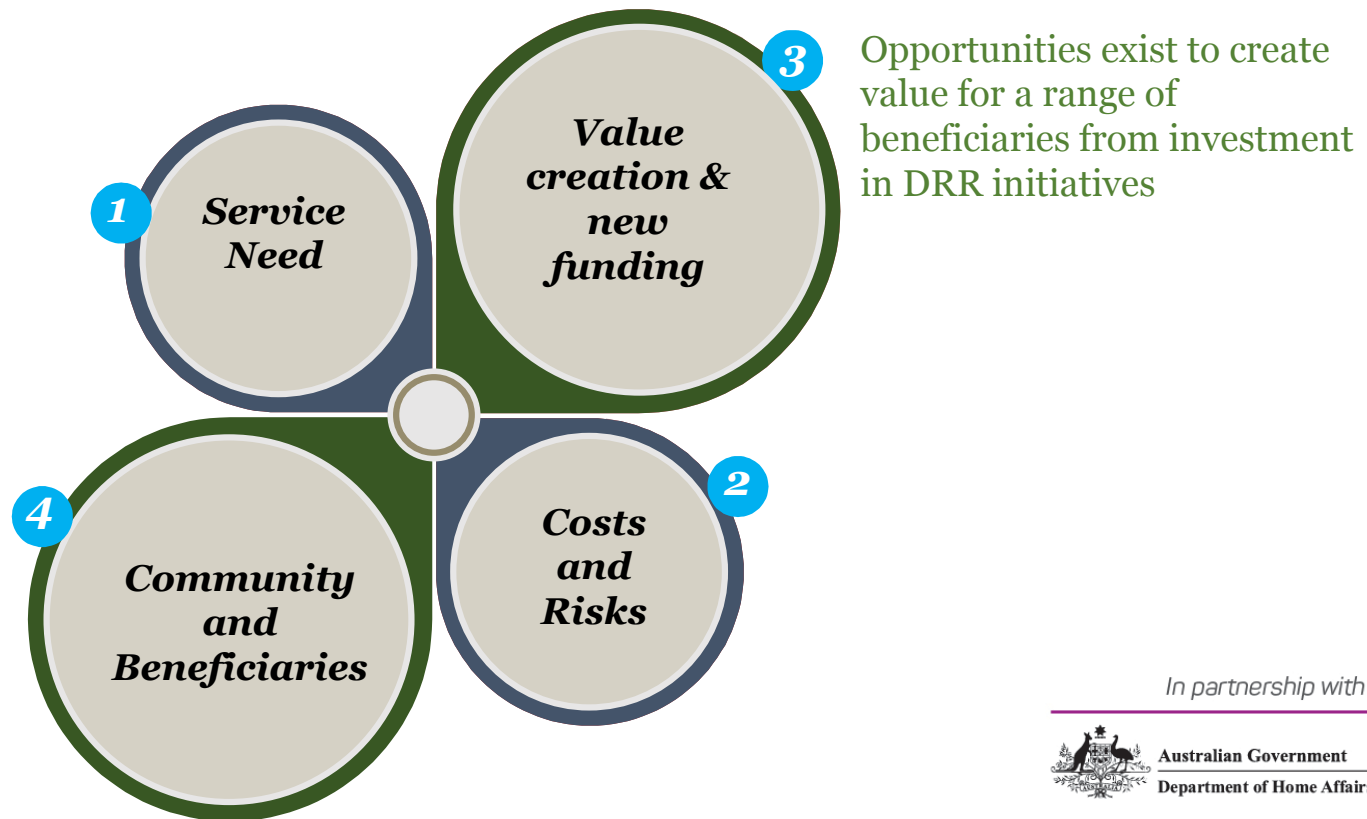
Australian Government
Department of Home Affairs





Guidance on Prioritisation

Value creation through DRR investments



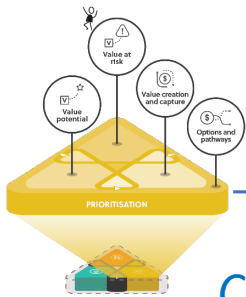
In partnership with



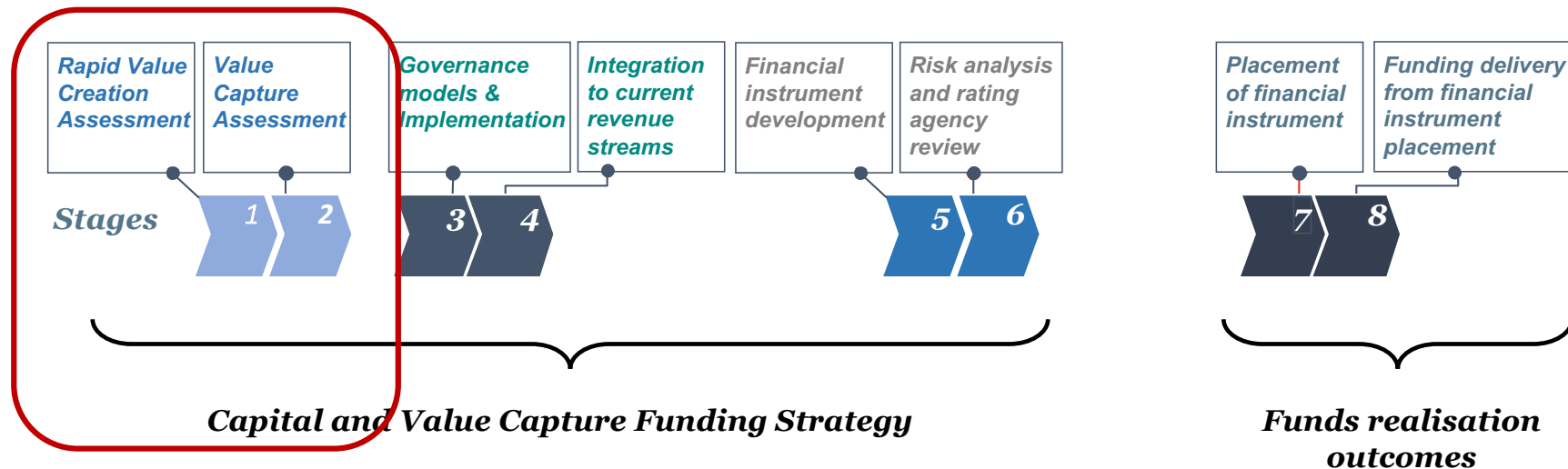
Australian Government
Department of Home Affairs



Guidance on Prioritisation



Charting the course for Value Creation and Capture and for realising funding



In partnership with



Australian Government
Department of Home Affairs



Take home messages

The drivers of climate and disaster risks (C&DR) are systemic – we need to change how we think about, assess and manage these risks

This means we need to shift from:

- *‘learning to do BAU better’* to *‘collectively learning to do differently’*
- seeing C&DRs as environmental or EM issues to treating them as central
- delaying decisions due to uncertainty or contestation to building our capacities in systems thinking, values literacy & using scenarios so we can make decisions in spite of this

Acknowledging we are all vulnerable to systemic risks we can begin to act on our immense capacities to collectively overcome these challenges