

Australian Institute for
Disaster Resilience



Australian Disaster Resilience
Conference presents

Knowledge Week

24 - 27 AUGUST 2020

aidr.org.au/adrc

#ADRC20



Australian Disaster Resilience Conference presents

○
KNOWLEDGE WEEK

————— **DAY THREE** —————

Community creating change



10.30AM – 4.30PM AEST | 26 AUGUST 2020






**Dr. Amanda
Howard**

University of Sydney

**Dr. Margot
Rawsthorne**

University of Sydney

**Local people, local knowledge, local action –
community-led disaster resilience: learning from
the Get Ready community pilot project in NSW**



Local people, local
knowledge, local
action: learning from
the Get Ready-
Disaster Resilient:
Future Ready pilots

Dr Amanda Howard (Presenter)

Dr Margot Rawsthorne (Presenter)

Dara Sampson

Dr Meaghan Katrak



Acknowledgement

- We want to acknowledge the diverse range of people who have continued to contribute to this project:
- NSW Project reference Group
- Sarah Anderson and Mandy Moore (OEM now Resilience NSW)
- FRRR staff – Natalie Egleton, Karyn McLeod, Fiona Bradshaw, Bethea Roberston, Emma Thomas and Janet Phillips
- Community members in North Richmond, Wee Waa and Ocean Shores
- Emergency Management staff and volunteers, local government staff and Councilors and workers from local community organisations



Project and Research Background

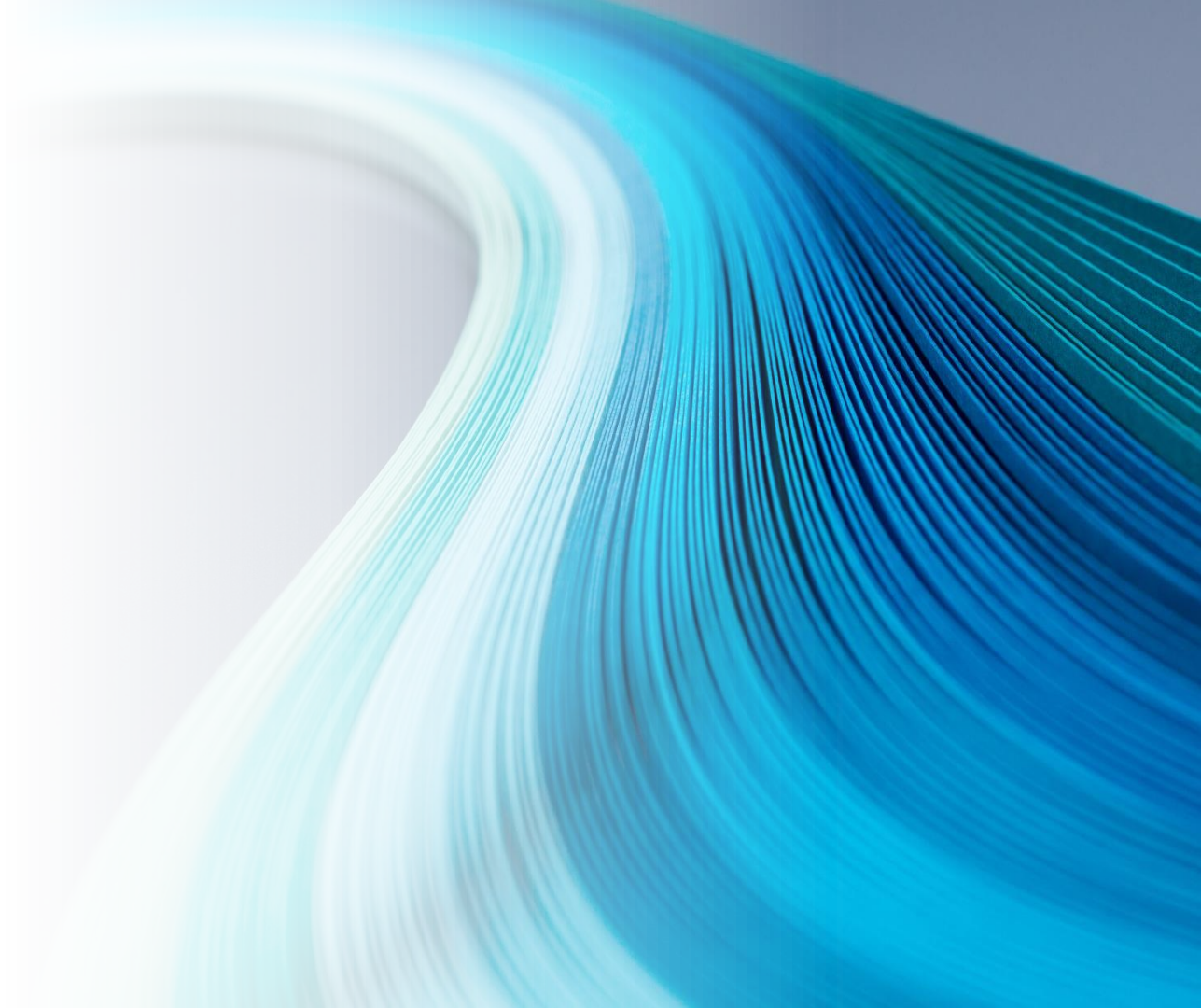
Partnership approach was key between:

- NSW Office of Emergency Management (now Resilience NSW)
- Foundation for Rural and Regional Renewal
- University of Sydney & University of Newcastle

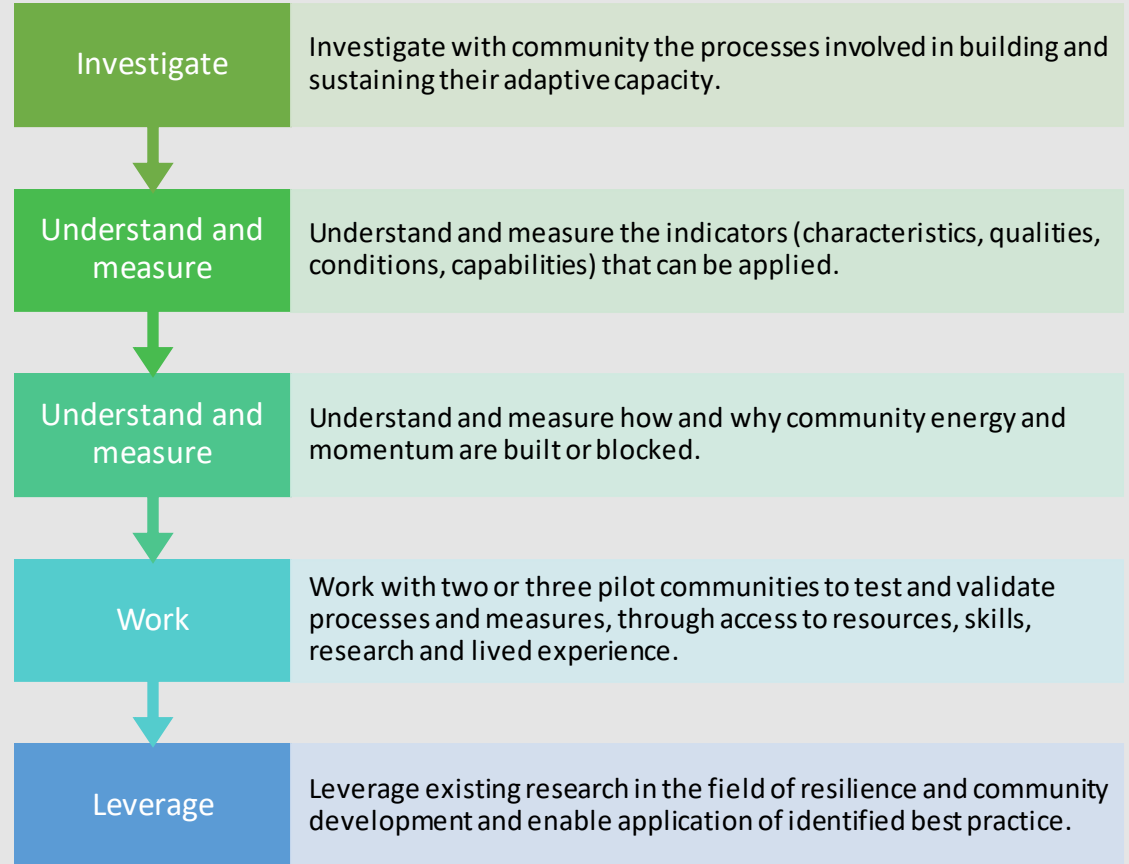
Project Reference Group included NSW RFS, NSW SES, NSW Fire and Rescue, NSW Dept. Primary Industries, Australian Red Cross



Project and Research Background

- 3 communities in NSW: rural/remote, coastal, peri-urban – North Richmond, Wee Waa and Ocean Shores
 - Communities chosen through EOI and assessment of intersecting disaster risk and diversity.
 - An action research design was developed working with partners, communities and stakeholders as the project unfolded.
- 

Project Aims and Research Design

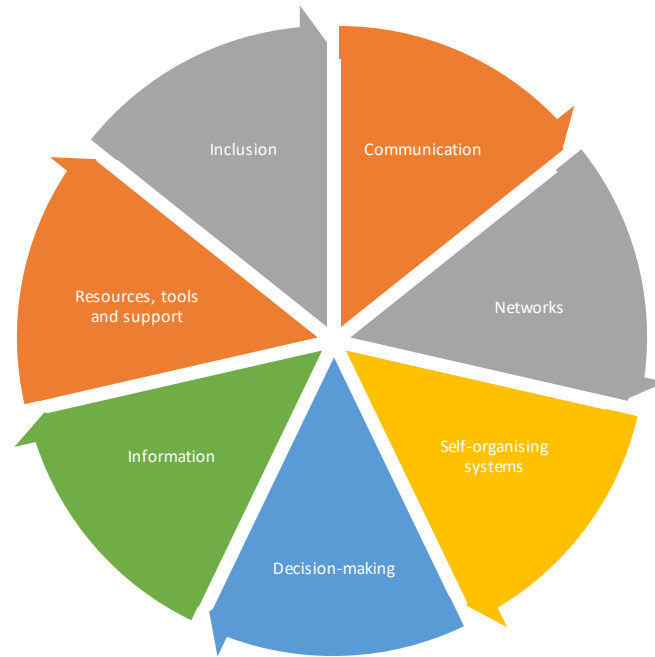


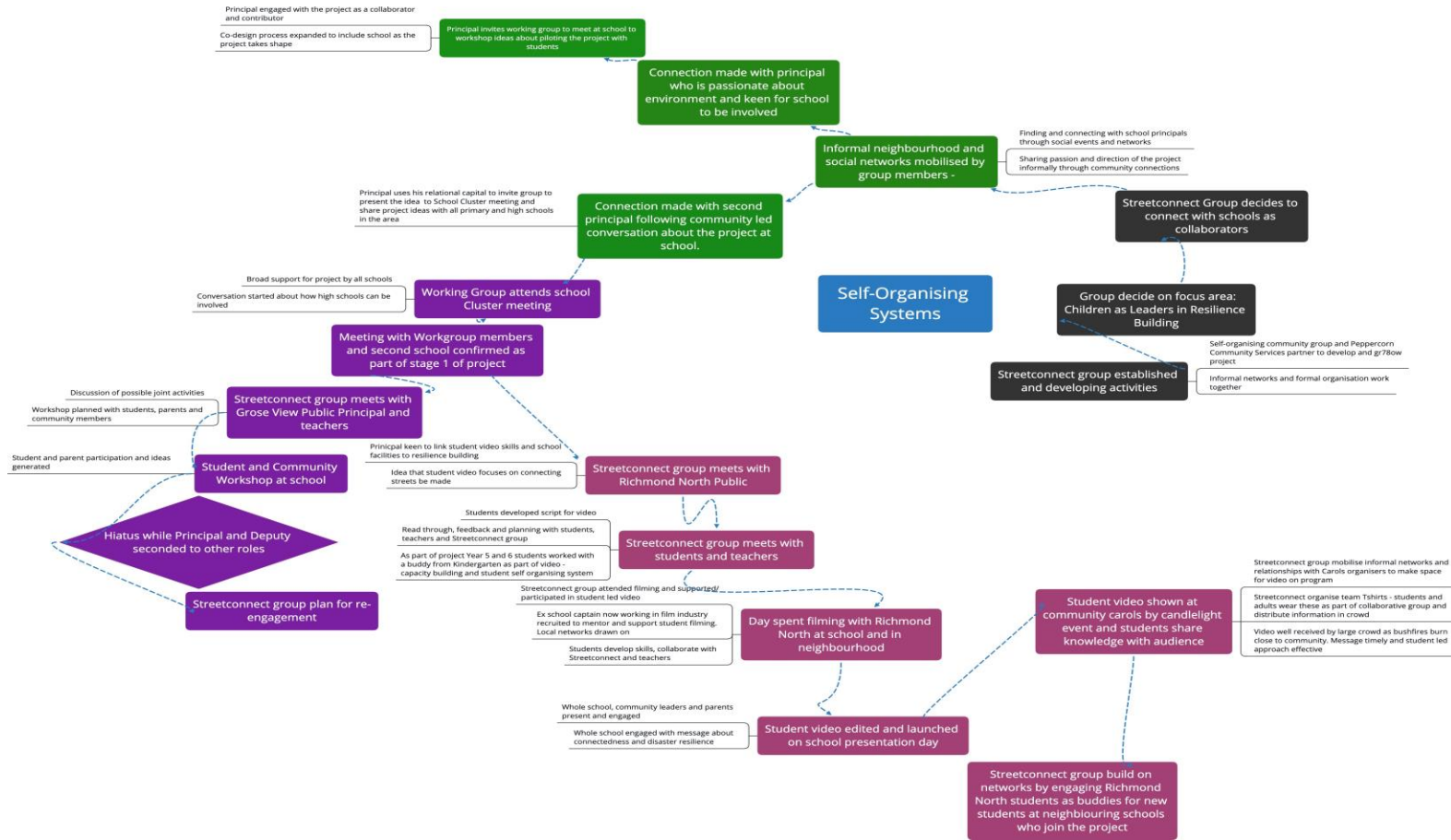


On the ground – project and research

- 2 year project timeline
- Community engagement –
 - workshops and community conversations
 - grant process
- Action research
 - researchers work alongside FRRR, communities and stakeholders
 - research data gathered and fed back into the unfolding project to assist with refining, clarifying and informing
 - Process and outcome data gathered, analysed and fed back into the project

Focus areas for assessing resilience





Trust

Workshop process creates space for trust building between individuals and groups

EM agencies attend, present information and articulate support for community led projects. Potential for trust to be built

Street connect group forms and co-design begins - trust developing

SES and RFS communication with Streetconnect following community contact - local staff and volunteers based on existing relationships

Communication from SES but no response from regional RFS

Invitation to LEMC to present Streetconnect initiative

10 minute presentation by Streetconnect group at LEMC

LEMC adopt hierarchical relationship with Streetconnect - community held accountable to LEMC. Not a trusted ally.

Community seen as needing to be controlled - distrust

No follow up from LEMC with Streetconnect group

Lost opportunity to consolidate local disaster resilience efforts

Streetconnect group experience lack of trust and decide to continue their work without LEMC as partner

Streetconnect group present to LEMC. Streetconnect group questioned about accuracy of the information they were sharing.

Streetconnect group engage with LEMC in hope of partnership


Streetconnect group approaches regional RFS and SES

Expanding trust relationships with local schools and communities

Trust acted on and built through partnership between Streetconnect group and Peppercorn


Trust develops further as students endorsed as community leaders and educators





Disaster
preparedness is
significantly more
effective when...

- Community-led resilience building is at the centre of disaster planning for everyone
- Communities are equal collaborators in resilience building efforts
- Shared responsibility is driven by shared planning and decision-making with communities
- There is a sustained investment of time, energy and resources
- Thinking and action moves from a crisis/command and control frame towards long term, agile and adaptive approaches



Disaster
preparedness is
significantly more
effective when...

- Resilience building information and communication is multi-way in design
- Community time, skills, knowledge and effort are recognised
- Resilience is understood as an array of networks, systems, relationships and alliances which include communities, EM agencies, govt, business, NGOs and other stakeholders

Where to from here?



RE-DESIGN OF
RESILIENCE BUILDING
PROCESSES



ATTENTION TO
ONGOING RESILIENCE
BUILDING



DIALOGUE AND
RELATIONSHIP
BUILDING BETWEEN
STAKEHOLDERS



CULTURAL CHANGE
AND TRAINING



INVESTMENT



Thanks and questions

- Amanda –
amanda.howard@sydney.edu.au
- Margot –
margot.rawsthorne@sydney.edu.au



Australian Institute for
Disaster Resilience



Australian Disaster Resilience
Conference presents

Knowledge Week

24 - 27 AUGUST 2020

aidr.org.au/adrc

#ADRC20