



Australian Government
National Recovery and Resilience Agency

Australian Institute for
Disaster Resilience 



#ADRC22

Land-use planning for bushfire: 12 years of reforms in Victoria

Kevin Hazell



Australian Government
National Recovery and Resilience Agency



Australian Institute for
Disaster Resilience

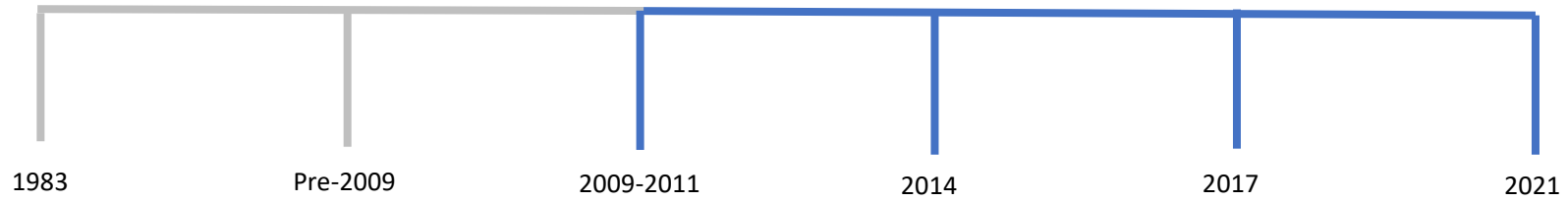


#ADRC22

Introduction

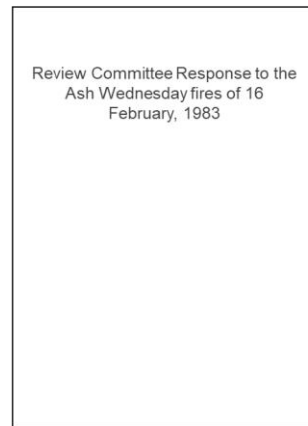
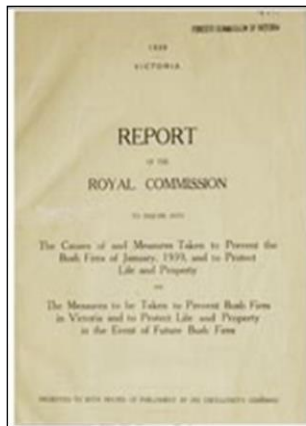


12 years of reforms





Reviews and more reviews...





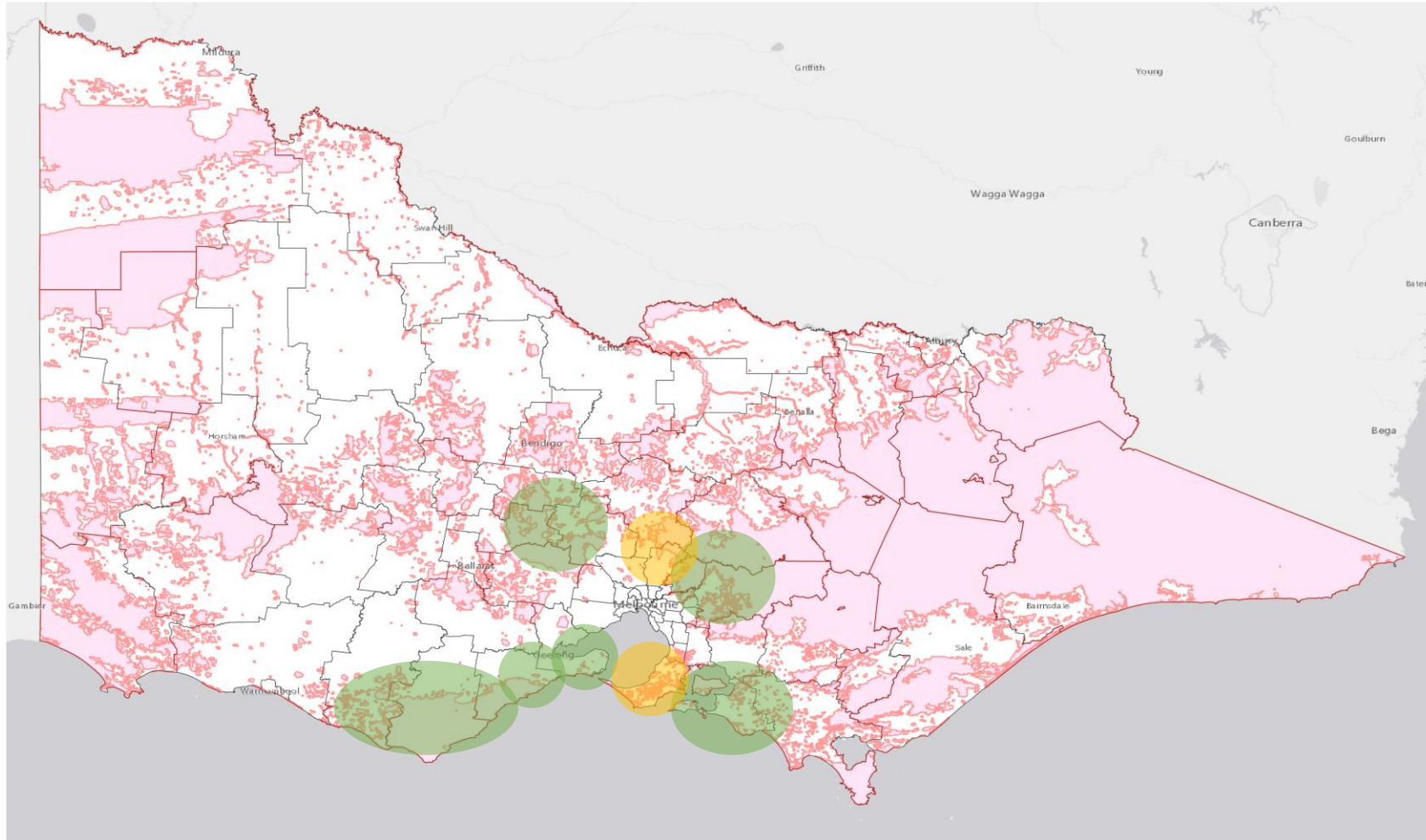
Key elements of the Victorian planning system response to bushfire

- Removed likelihood from the risk equation
- A focus on risk avoidance
- Bushfire life safety overrides all other planning policies
- Landscape and settlement scale assessments
- A layering of resilience, without a single factor being determinative



Complementary systems

- Bushfire and emergency risk managers
- Non-bushfire protective policies





Complementary systems

- Bushfire and emergency risk managers
- Non-bushfire protective policies
- Australian Standards
- Non-planning legislative frameworks



Australian Government
National Recovery and Resilience Agency



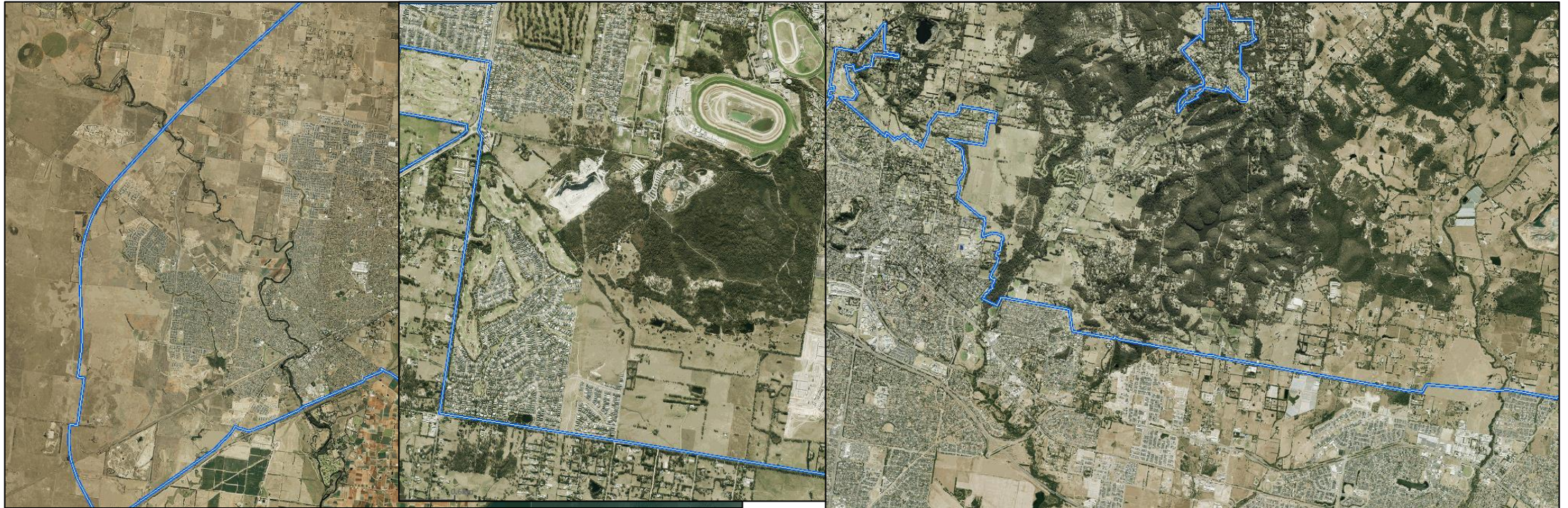
Australian Institute for
Disaster Resilience



#ADRC22

Reflections from a planner's perspective

- Spatial planning (place matters)





Australian Government
National Recovery and Resilience Agency

Australian Institute for
Disaster Resilience 



#ADRC22





Reflections from a planner's perspective

- Spatial planning (place matters)
- Connect land use planning to community safety



Australian Government
National Recovery and Resilience Agency

Australian Institute for
Disaster Resilience 



#ADRC22





Key reflections from a planner's perspective

- Spatial planning (place matters)
- Connect land use planning to community safety
- Manage carve-outs with nuance
- Start with the end in mind
- Success is mostly hidden



Australian Government
National Recovery and Resilience Agency



Australian Institute for
Disaster Resilience




#ADRC22

Can it be sustained...



THANK YOU

Kevin Hazell

 0457 107 885

 support@bushfireplanning.com.au

 www.bushfireplanning.com.au

Kevin Hazell

BUSHFIRE PLANNING