



Let's Do More Than Talk About The Weather

Building the Bureau's Community Engagement Capability

Fiona Dunstan AFSM
Manager, National Community Engagement



Strengthening our service

Who will benefit?



The Bureau's national footprint configured to deliver a significant improvement to the quality, responsiveness, and impact and value of our services.



Customers, partners and stakeholders will more easily and efficiently access Bureau expertise—to better support their decision making.



Our products and services will deliver a greater impact and drive more value for the Australian community, emergency management partners, industry, and national security partners.



The health and resilience of our staff will be stronger— our people will be empowered to learn and grow through systematic, high quality, and effective training and simulation.





Why Resilience Building



Decision Support Services

Decision Support Services Program wraps around all four phases of the Emergency Management cycle



Hazard Preparedness and Response Teams

Hazard Preparedness and Response National

Provide deeper connections to Commonwealth and national customers, partners and stakeholders

The National team ensures the Bureau's products and services are more relevant, nationally consistent (as appropriate) and deliver outstanding impact and value to our key partners and the Australian community

Hazard Preparedness and Response East

Provide decision support services to emergency management agencies and first responders in:

- Queensland
- New South Wales
- Australian Capital Territory

Hazard Preparedness and Response South

Provide decision support services to emergency management agencies and first responders in:

- South Australia
- Victoria
- Tasmania

Hazard Preparedness and Response North & West

Provide decision support services to emergency management agencies and first responders in:

- Western Australia
- Northern Territory

Community Engagement, Customer and Data Solutions

Create partnerships to support increased community resilience to the impacts of all weather-related hazards

Deliver national, regional and local community engagement services and activations

Provide real-time data solutions, climate and spatial data solutions for emergency management and other Bureau customers.

Lead the Bureau's relationship with Emergency Management Sector



Community Engagement Strategic Priorities

Grow the Australian community's capacity to be more resilient to the impacts of weather, water, climate, space and oceans through data, education and knowledge building programs in partnership with community focused organisations.



Deliver best practice
in community
engagement partnerships

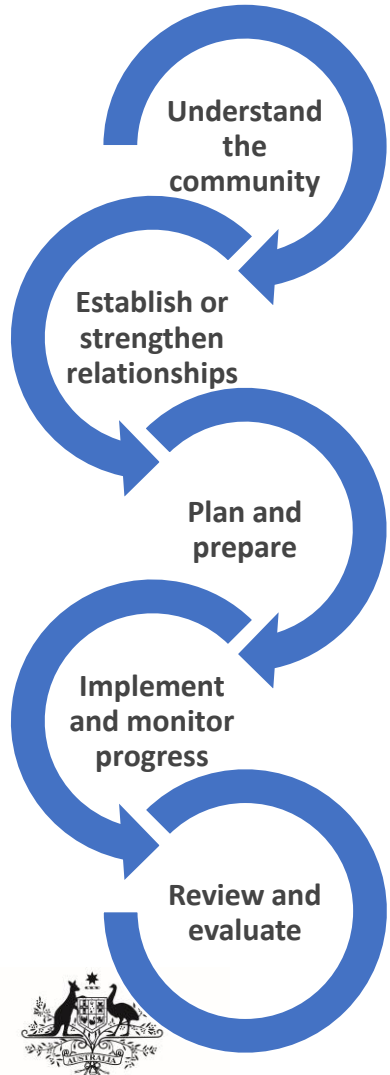
Deeply understand
community needs

Deliver data and a
continuous, multi-channel
narrative



Community Engagement Initiatives

#	Initiative
CE1	Hawkesbury Nepean Valley
CE2	Heatwave Service
CE3	Australian Fire Danger Rating System
CE4	Common Alerting Protocol (CAP AU)
CE5	Reach and impact to Australian Community
CE6	Space Weather (and transformation plan)
CE7	Indigenous Australians



Partnership Approach

The Bureau delivers a continuous data flow and an ongoing weather narrative

All Australians

ATSI
communities

CALD
Australians

Regional,
remote and
rural
communities

The Bureau establishes partnerships to deliver resilience building projects

Commonwealth
Government

EM Sector

State
Government

Health Sector

Local
Government

NGO Sector

Enduring relationships and partnerships to achieve improved community resilience to weather, water, climate, space and ocean impacts

Community Engagement Initiatives

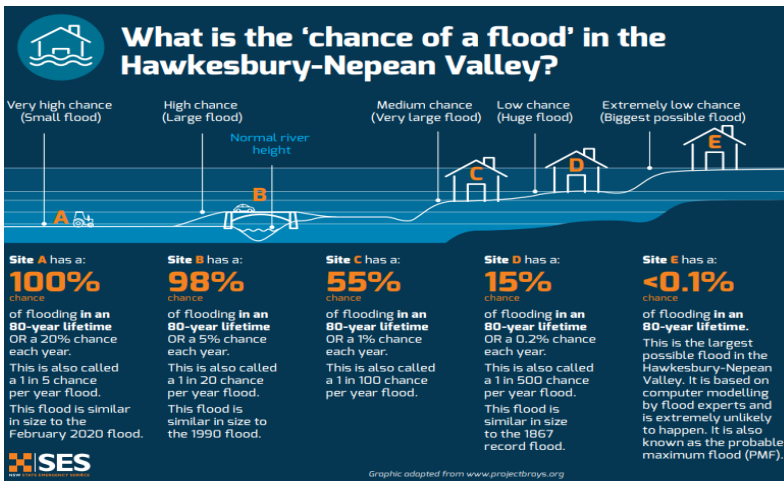
Partnership with AIDR and ABC Kids Early Education

Play School Everyday Helpers series

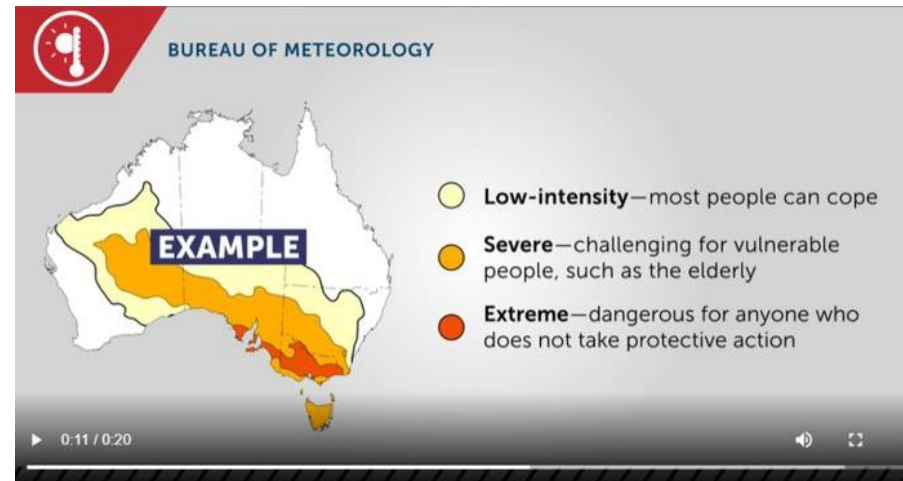


Community Engagement Initiatives

Partnership with NSW SES, Infrastructure NSW and Queensland Reconstruction Authority



Hawkesbury Nepean Valley



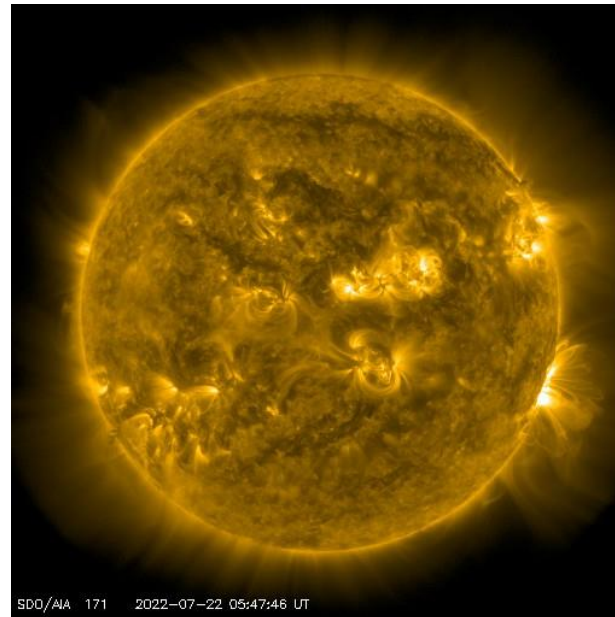
Heatwave Warning Service



Extreme weather videos

Community Engagement Initiatives

Presentations, Forums and Expertise Shared



Aurora australis - Howden, Tasmania
Sophie Fazackerley!

Indigenous Australians

Reconciliation Action Plan and Indigenous Engagement During Big Weather Events



Community Engagement Team

Manager National Community
Engagement
Fiona Dunstan

Community Engagement
Lead East
Laura Cooper

Community Engagement
Lead South
Kimberley Juett

Community Engagement
Lead N+W
Jo Madin

Community Engagement
Lead
National
MJ McLeod

CE Officer QLD
Tammy Hunter

CE Officer SA
Belinda Dunbar

CE Officer NT
Josie Matthiesson

CE Officer National
Len Morris

CE Officer NSW
Leah Soccio

CE Officer Vic
Grace Kirkby

CE Officer WA
Vacant

CE Support Officer ACT
Millie Swain

CE Officer Tas
Michelle Nichols



Connect with us:



Fiona Dunstan
0402 978 013

fiona.dunstan@bom.gov.au