



“I thought you were more of a man than that”

Men and disasters

Dr Debra Parkinson



Gender & Disaster Australia



“The gender categories of **feminine and masculine**, emerge from the interaction of

- a group of people
- at a particular time
- in a particular place
- within a system of power struggles, differences, and negotiations.

Categories of understanding are therefore **contextual**, yet humans act *as if* the categories were real, which makes the categories **real in their consequences**.





Men on Black Saturday

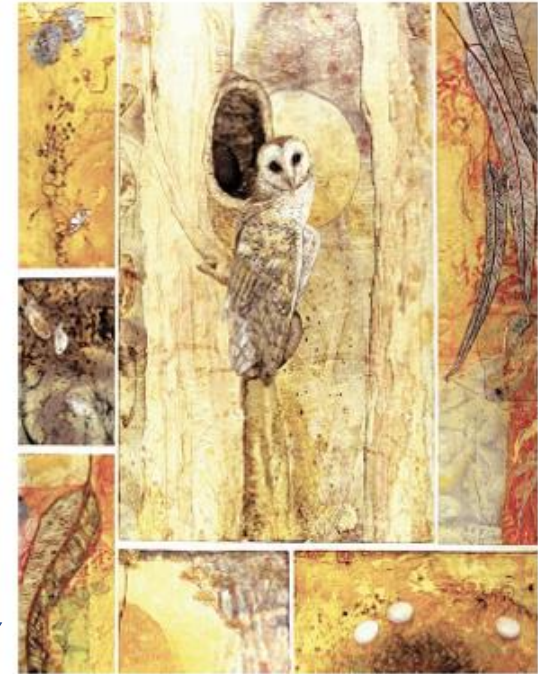
Risks and opportunities for change



32 men

Funded by Natural Disaster Resilience Grants Scheme 2013

Long-term disaster resilience



26 men

Vol. 1 Executive Summary and Recommendations

Vol. 2 Long-term disaster resilience: Full report

Vol. 3 Long-term disaster resilience: Literature review

Funded by Natural Disaster Resilience Grants Scheme 2018





Disasters are the great test of manhood

“Brave,
heroic,
decisive,
unemotional,
stoic
– and right”





Men's strengths?

“The ability to shrug things off.

Which isn't a strength at all, is it?

It's just a denial really – isn't it? Shrugging something off?

It's not so much admit defeat, but self-preservation ...

If I don't pull up here, I'm going to drive myself into the ground and be good to nobody.” (Steve)





never
shifted from
thinking
they had
only
themselves
to rely on





“I'm pretty vulnerable. I've got a history of suicide in my family on both sides... so I've had a determination to fight that. But ... I found that when I was really negative, [when] it got that bad ... I couldn't find a way of telling anyone.”

“I haven't even told [my wife] this ... Anyway, I came home and I was just sitting in the car out there, nothing was built ... and I just felt like hanging myself. So I just sat there ... You are the only two I've told. I've told no-one else.”





“I was lucky enough [to be seen] at the right time otherwise I would have done stupid things to myself or to other people ... When you're in a suicidal/homicidal state you really haven't got many tools to keep you on a level field.”

“There have been very, very many times where I’ve certainly thought about ending it all and, ‘This is just not worth it’, or, ‘How many people can I kill?’... To get up in the morning and think to yourself, ‘Why am I bothering to do this? What’s left?’ Because there’s nothing left. “





The presence of these conditions influence higher numbers of men *to choose* violent, abusive, hyper-masculine masculinities.

(Austin, 2008)





SES members report widespread bullying, harassment and rape al



By [Wendy Tuohy](#)
August 8, 2021 – 8.24pm

NSW Police bullying and officers out



By [Nigel Gladstone](#)
April 11, 2021 – 12.00am

NSW Police officers made 500 formal complaints about bullying from their colleagues in 2019 and 2020.

External Review of Culture and Issues Management to support the Country Fire Authority of the Future

Summary of Key Findings and Recommendations
April 2022



INDEPENDENT REVIEW INTO Workplace Equality in Ambulance Victoria

VOLUME 1





1. Take up Gender and Disaster Australia's *Lessons in Disaster* training, and *Train-the-Trainer*, both with Federal government subsidies.
2. Make the *National Gender and Emergency Management Guidelines* and checklists part of prevention, planning, response and recovery in your organisation or community
3. Work with Gender and Disaster Australia to establish a *GAD Taskforce* in your state or territory, headed by your Emergency Management Commissioner (or equivalent).



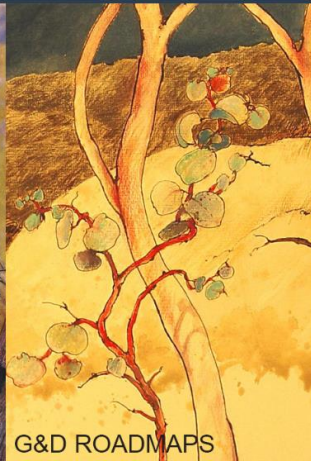
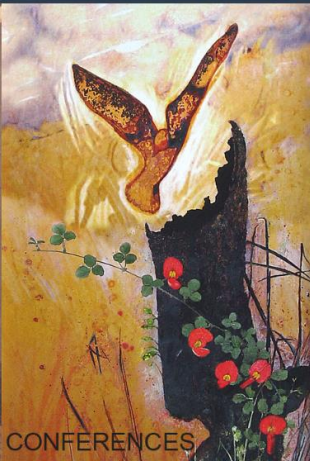
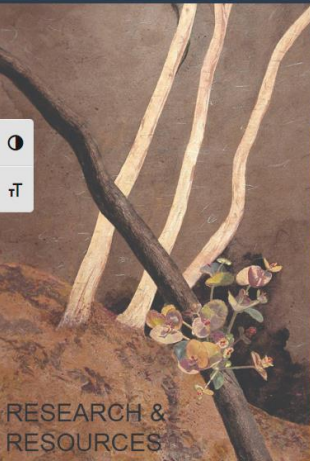


Gender and Disaster Australia

An initiative of WHGNE, WHIN & MUDRI

[HOME](#) [ABOUT](#) [INFO HUB](#) [THEMES](#) [NEWS](#) [CONTACT](#) [TRAINING HUB](#) [Q](#)

EXIT SITE



Dr Debra Parkinson
Executive Director



Rachael Mackay
Manager, Train the Trainer program



Jaspreet Kaur
National Project and Finance Manager



Steve O'Malley AFSM
Manager of Emergency Management sector engagement



Liam Leonard
Manager of Policy Training and Quality Assurance



Emily Hedger
Administration Consultant

